

GENERAL PLAN
(COMPRISING 2 SHEETS)
OF THE TOWNSHIP OF
CHLOORKOP EXTENSION 71

COMPRISING 6 ERVEN NUMBERED 5371 TO 5376 AND THE THOROUGHFARES
SITUATE ON THE REMAINDER OF PORTION 22 OF THE FARM

KLIPFONTEIN No. 12-IR

VIDE DIAGRAM S.G.No. A338/1932
DEED OF TRANSFER No. T766/1933
PROVINCE OF GAUTENG

SCALE 1:1500

SERVITUDE NOTE:
Even 5371 and 5373 to 5375 are each subject to a servitude
3,00 metres wide for stormwater purposes, as shown.

This General Plan was prepared by me and I
undertake to place the beacons of the erven in positions
which correspond with the data on this plan and to submit
thereof within the prescribed period to the Surveyor-General
for approval

G.D. REID PLS 1116
Professional Land Surveyor

S.G. No.

SHEET 1

Provisionally approved

for Surveyor-General

Approved

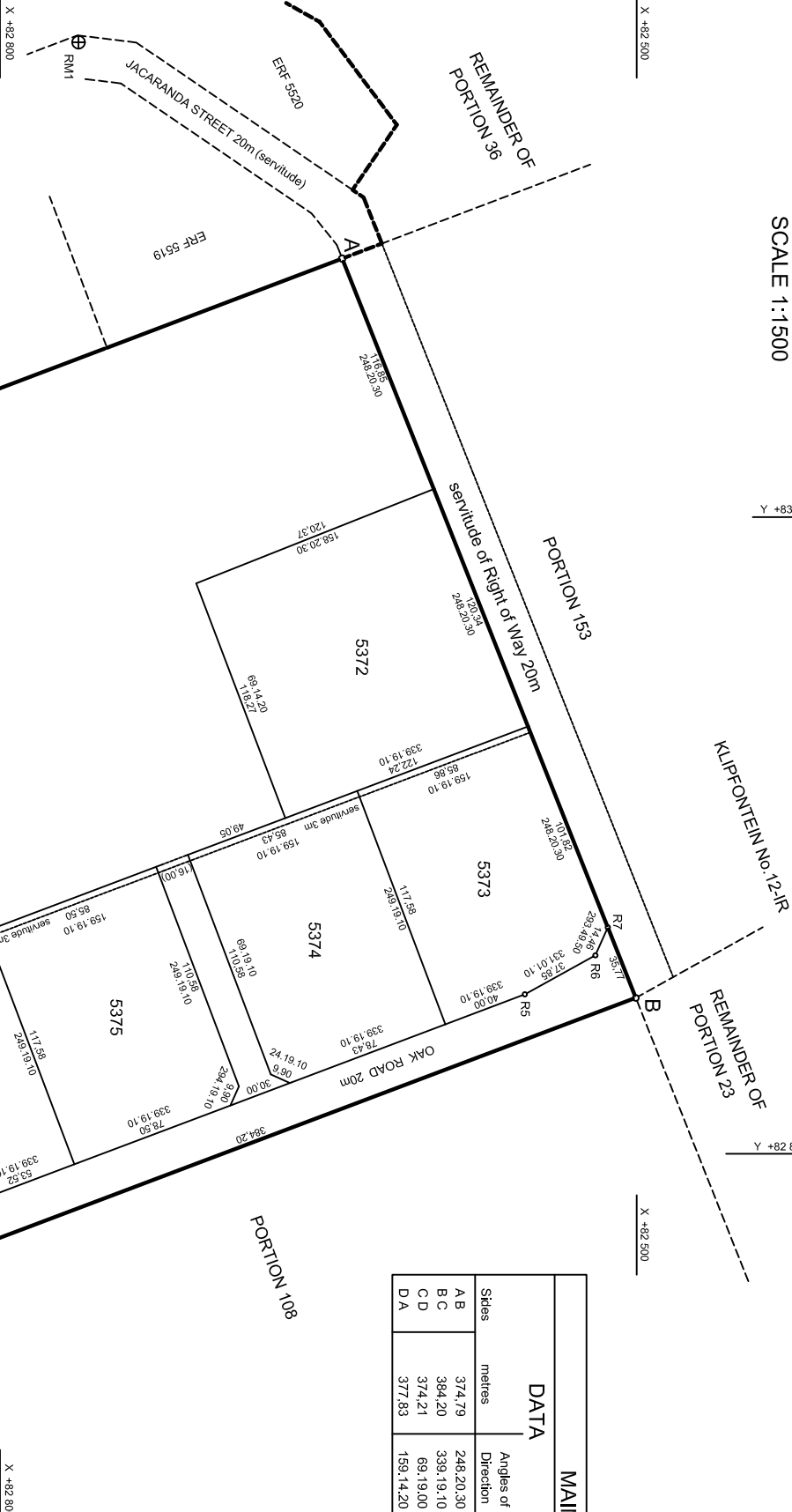
for Surveyor-General

Y +83 100

Y +82 800

X +82 500

X +82 500



MAIN FIGURE			CO-ORDINATES	
DATA		Angles of Direction	System: WGS29°	Y metres X
Sides	metres		Constants	+0.00 +2 800 000.00
A B	374.79	248.20.30	A	+83 221.80 +82 638.76
B C	384.20	339.19.10	B	+82 873.47 +82 500.44
C D	374.21	69.19.00	C	+82 737.79 +82 859.80
D A	377.83	159.14.20	D	+83 087.87 +82 992.05

TRIGONOMETRICAL BEACONS

▲ 50 +82 644.29 +83 391.98
Klipfontein F.K.
▲ 671 +85 761.44 +90 417.25
Modderfontein

REFERENCE MARKS

RM1 +83 326.02 +82 763.34
RM2 +83 112.20 +83 066.09

BLOCK CORNERS

R1	+83 095.16	+82 972.83
R2	+82 796.50	+82 860.08
R3	+82 776.97	+82 841.75
R4	+82 876.12	+82 814.97
R5	+82 875.16	+82 592.60
R6	+82 893.50	+82 519.48
R7	+82 906.72	+82 513.64

AREAS

Erft number	Square metres
5371	7.2579
5372	1.4471
5373	1.0001
5374	1.0020
5375	1.0028
5376	1.0050

FILE
SURVEY RECORDS:
COMPILATION: IR1A-14/A, IRNA-24
DEEDS: PRETORIA